



Environmental Product Declaration (EPD)

In accordance with ISO 14025:2006 and EN 15804:2012+A2:2019/AC:2021

Ready-Mixed Concrete supplied to the Advanced Manufacturing Research Facility (AMRF) First Building



Artist's impression of the Advanced Manufacturing Research Facility building (Taylor 2024)

EPD Registration no. S-P-10952 | Version 1.0

Issued 2024-02-29 | Version: 2024-02-29 | Valid until 2029-02-28

Geographical scope: Australia

EPD of multiple concrete products from one location (see page 3)

An EPD should provide current information and may be updated if conditions change.

The stated validity is therefore subject to the continued registration and publication at www.epd-australasia.com



Contents

Programme information and verification	1
About Gunlake	2
Product description	3
Technical compliance	4
Declared unit	4
Scope of the Environmental Product Declaration	5
Product stage (A1-A3)	7
End of life stage (C1-C4)	8
Resource recovery stage (D)	8
Life cycle assessment (LCA) methodology	9
Background data	9
Key assumptions	9
Allocation	9
Cut-off criteria	9
Declared unit	9
Life cycle assessment (LCA) indicators	10
Results: Environmental profiles	12
Additional information	18
References	19
Contact information	20

Disclaimer

EPDs within the same product category but registered in different EPD programmes, or not compliant with EN 15804, may not be comparable. For two EPDs to be comparable, they must be based on the same PCR (including the same version number) or be based on fully-aligned PCRs or versions of PCRs; cover products with identical functions, technical performances and use (e.g. identical declared/functional units); have equivalent system boundaries and descriptions of data; apply equivalent data quality requirements, methods of data collection, and allocation methods; apply identical cut-off rules and impact assessment methods (including the same version of characterisation factors); have equivalent content declarations; and be valid at the time of comparison. For further information about comparability, see EN 15804 and ISO 14025.



Programme information and verification

An Environmental Product Declaration (EPD) is a standardised way of quantifying the potential environmental impacts of a product or system. EPDs are produced according to a consistent set of rules – Product Category Rules (PCR) – that define the requirements within a given product category. These rules are a key part of ISO 14025 as they enable transparency and comparability between EPDs. This EPD provides environmental indicators for selected concrete products, manufactured at Gunlake’s Prestons facility in the Greater Sydney region in New South Wales (NSW), Australia.

This EPD is a “cradle-to-gate plus modules C1-C4, D” declaration covering production and end-of-life life cycle stages.

This EPD is verified to be compliant with EN 15804. EPDs of construction products may not be comparable if they do not comply with EN15804. EPDs within the same product category but from different programs or utilising different PCR documents may not be comparable, see the disclaimer on the previous page.

Gunlake Concrete NSW Pty Ltd, as the EPD owner, has the sole ownership, liability, and responsibility for the EPD.

Declaration Owner	Gunlake Concrete NSW Pty Ltd Double Bay NSW 2028, Australia Email: info@gunlake.com.au Web: www.gunlake.com.au Phone: +61 02 9363 1744	
EPD Program Operator	EPD Australasia Limited Address: 315a Hardy Street Nelson 7010, New Zealand Web: www.epd-australasia.com Email: info@epd-australasia.com Phone: +61 2 8005 8206 (AU)	
EPD Produced by:	start2see Pty Ltd 36 Renaissance Bvd, Mernda, VIC 3754, Australia Web: www.start2see.com.au Email: Rob.Rouwette@start2see.com.au Phone: +61 403 834 470	
EPD registration number:	S-P-10952	Version: 1.0
Published:	2024-02-29	Valid until: 2029-02-28 (5 years)
Reference year for data:	2020-07-01 – 2021-06-30	

CEN standard EN 15804 served as the core PCR

PCR:	PCR 2019:14 Construction Products, Version 1.3.1, 2023-07-08 (valid until 2024-12-20) C-PCR-003 (to 2019:14) Concrete and concrete elements, version 2023-01-02
PCR review was conducted by:	The Technical Committee of the International EPD® System. Chair: <i>No chair appointed.</i> Contact via info@environdec.com
Independent verification of the declaration and data, according to ISO 14025:	<input type="checkbox"/> EPD process certification (Internal) <input checked="" type="checkbox"/> EPD verification (External)
Third party verifier: Accredited or approved by EPD Australasia Ltd	Andrew D. Moore, Life Cycle Logic Web: www.lifecyclelogic.com.au Email: andrew@lifecyclelogic.com.au Phone: +61 4 2432 0057





About Gunlake

Gunlake is the largest independent supplier of concrete and quarry products in the Sydney Region and NSW. Over the last 15 years Gunlake have developed a cycle of continuous growth building state-of-the-art concrete batch plants. Currently we have five concrete plants in operation and another in the planning phase.

The Gunlake Group are a proudly Australian owned, family company spanning four generations in the quarrying and concrete industry in Australia. We strive to deliver:

- Industry leading service,
- The highest quality products, and
- Innovative solutions to support our customers' requirements.

Beginning with one concrete plant and plans for a quarry in 2007, Gunlake Group has grown in 2024 to five operational concrete plants. We have a fleet of 105 concrete agitators with more to come. The quarry at Marulan is currently consented for 4.2 million tonnes per annum and services the concrete, asphalt, civil and infrastructure markets and recently completed the supply of 420,000 tonnes of crushed rock to the new Western Sydney Airport's runway.

Gunlake Quarries is a supplier of premium quarry materials across New South Wales. Gunlake Quarries is proud to deliver premium aggregate to Gunlake Concrete, as well as some of Australia's largest infrastructure projects.

This EPD covers seven different mixes, manufactured at the Prestons plant, in NSW.

Product description

Gunlake produces Ready-Mixed concrete in line with Australian Standards, AS1379 Specification and Supply of Concrete.

The products outlined in this EPD are manufactured at Gunlake’s Prestons plant in the south-west of Sydney, NSW. The concrete is used in the construction of the Advanced Manufacturing Research Facility (AMRF) First Building located in Bradfield City Centre at the heart of the Western Sydney Aerotropolis’ growing innovation hub.

An overview of the products included in this EPD is presented below in Table 1. The product composition (across all included products) is presented in Table 2.

Table 1: Selected Ready-Mixed concrete products

Product	Strength grade
N25/20/100 GS3	25 MPa
N32/20/100 GS3	32 MPa
N40/20/100 GS3	40 MPa
N50/20/100 GS3	50 MPa
N40/20/120 GS3	40 MPa
S40/10/220 TAY/GS3	40 MPa
NSG 8:1 No Fines	n/a





Table 2: Product content

Ingredient	Proportion (% m/m)	Post-consumer material, weight (%)	Renewable material, weight (%)
General Purpose Cement [‡]	6-10%	0%	0%
Fly Ash †	1-4%	0%	0%
Slag (GGBFS) †	0-8%	0%	0%
Coarse aggregates †	41-84%	0%	0%
Natural sand †	0-28%	0%	0%
Manufactured sand †	0-9%	0%	0%
Admixtures	<0.1%	0%	0%
Water	5-8%	0%	0%

[‡] Cement in concrete contains traces of Chromium VI (hexavalent).

[†] Crystalline-silica (quartz) may be a constituent of sand, crushed stone, gravel, blast furnace slag and fly ash used in any particular concrete mix.

The products, as supplied, are non-hazardous. The products included in this EPD do not contain any substances of very high concern as defined by European REACH regulation* in concentrations >0.1% (m/m). Dust from this product is classified as Hazardous according to the Approved Criteria for Classifying Hazardous Substances 3rd Edition (NOHSC 2004). Concrete products are classified as non-dangerous goods according to the Australian Code for the Transport of Dangerous Goods by Road and Rail. When concrete products are cut, sawn, abraded or crushed, dust is created which contains crystalline silica, some of which may be respirable (particles small enough to go into the deep parts of the lung when breathed in), and which is hazardous. Exposure through inhalation should be avoided.

The product code for ready mixed concrete is UN CPC 375 (Articles of concrete, cement and plaster) and ANZSIC 20330 (Concrete – ready mixed – except dry mix).

* Regulation (EC) No 1907/2006 of the European Parliament and of the Council of 18 December 2006 concerning the Registration, Evaluation, Authorisation and Restriction of Chemicals.

Technical Compliance

Gunlake concrete products comply with relevant technical specifications as per AS 1379:2007 "Specification and supply of concrete", applicable legislation, regulations and industry standards plus project requirements.

G-Lab Materials Testing Pty Ltd is Gunlake's 100% owned in-house laboratory that is NATA accredited. G-lab drives the highest standards of concrete and quarry material performance.

Declared unit

"1 cubic metre (m³) of ready-mixed concrete, as ordered by our clients"



Scope of the Environmental Product Declaration

This EPD covers life cycle stages A1-A3, C1-C4 and D. This EPD covers the processes that occur in as many of the product’s life cycle stages as could be effectively modelled. Stages A4, A5 and B1-B7 have not been included as these are better defined at building or structure level.

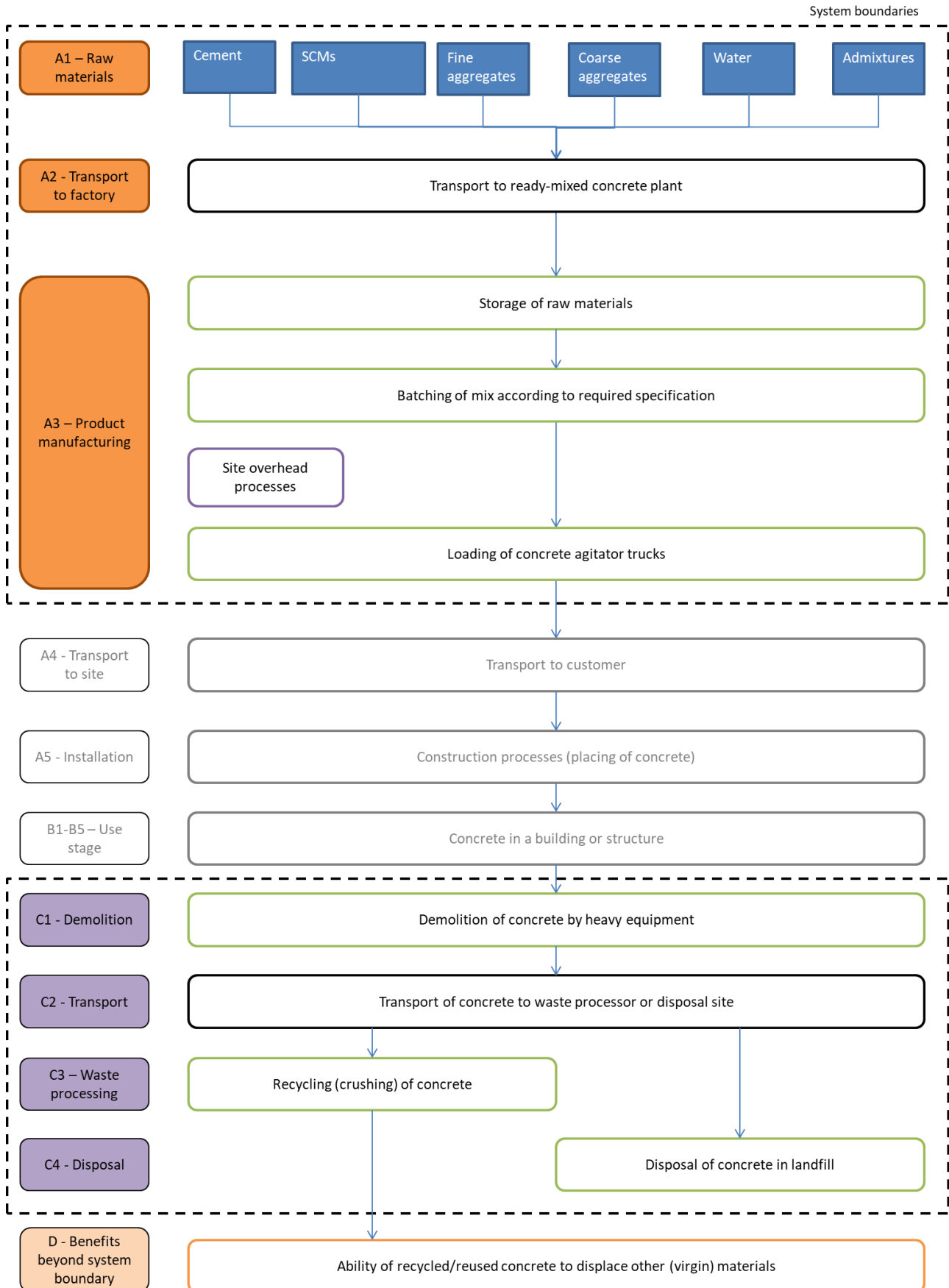
Table 3: Scope of EPD

Stages	Product Stage			Construction Stage		Use Stage							End-of-life Stage				Benefits beyond system boundary
	Raw Materials	Transport	Production	Transport	Installation	Use	Maintenance	Repair	Replacement	Refurbishment	Operational energy use	Operational water use	Deconstruction/Demolition	Transport	Waste Processing	Disposal	
Modules	A1	A2	A3	A4	A5	B1	B2	B3	B4	B5	B6	B7	C1	C2	C3	C4	D
	Scenario			Scenario							Scenario				Scenario		
Modules Declared	✓	✓	✓	ND	ND	ND	ND	ND	ND	ND	ND	ND	✓	✓	✓	✓	✓
Geography	AU, JP	AU	AU										AU	AU	AU	AU	AU
Share of specific data	>80%																
Variation products	0%																
Variation sites	0%																

✓ = module is included in this study

ND = module is not declared. When a module is not accounted for, the stage is marked with “ND” (Not Declared). ND is used when we cannot define a typical scenario.

Figure 3 – Flow diagram of main ready-mixed concrete production processes, life cycle stages and visualization of system boundaries



Product Stage (A1-A3)

Raw Materials – Module A1

Extraction and processing of raw materials results in environmental impacts from the use of energy and resources, as well as from process emissions and waste.

- Cement is mainly produced from clinker (made from limestone) and gypsum.
- Aggregates are extracted from quarries. (Coarse aggregates and manufactured sand are sourced from Gunlake's Marulan Quarry.)
- Supplementary Cementitious Materials (SCM): Fly ash and GGBFS (ground granulated blast furnace slag) are rest products from electricity generation and steel production, respectively.
- Admixtures are specialised chemical formulations that are typically produced by blending selected ingredients.

Transportation – Module A2

Raw materials are typically transported from suppliers to our site via (articulated) trucks. Transport of raw materials has been included in the LCA based upon actual transport modes and distances relevant to our site in Prestons.

Manufacturing – Module A3

Ready-mixed concrete products are manufactured by mixing the concrete constituents in carefully dosed quantities to achieve desired engineering properties.

The "**Construction process stage**" and "**Use stage**" have been excluded from the life cycle assessment, as the ready-mixed concrete can be used for a range of different applications for which the use scenarios are unknown. The impacts of these stages are best determined at project level.



End of life stage (C1-C4)

The end-of-life modules for Ready-Mixed concrete are based on generic scenarios. The scenarios included are currently in use and are representative for one of the most probable alternatives.

Module C1 covers demolition of the concrete at the end of its service life. For concrete produced in Prestons, we have used the end-of-life scenario representative for NSW building & demolition materials products based on the National Waste Report 2022 (NWR 2022). This scenario implies that 79.6% of the concrete is recycled and the remaining 20.4% of the concrete is sent to landfill.

Module C2 comprises the transport from the demolition site to a recycling centre or landfill site (50km). Module C3 encompasses the recycling process (i.e. crushing of concrete), while Module C4 represents disposal of concrete in a landfill site.

The concrete reaches end-of-waste status when it is crushed and stockpiled as “recycled crushed concrete” (RCC) aggregates.

We have modelled a single scenario for concrete with a density of 2,350 kg/m³. This is a conservative value for the concrete mixes covered by the EPD. The impact of this simplification is much smaller than the impact of the scenario and data assumptions applied to the end-of-life modules.

Due to high uncertainty in the parameters and lack of data, CO₂-uptake (carbonation) has not been included at end-of-life.

Resource recovery stage (D)

Module D includes any benefits and loads from net flows leaving the product system (that have passed the end-of-waste state). For this EPD, any material collected for recycling and processed in Module C3, is considered to go through to Module D. We have assumed that Recycled Crushed Concrete aggregates (the output of module C3) replace virgin aggregates (crushed rocks) in module D.

Per cubic metre of concrete, module D credits the avoided impacts for 1.87 tonnes of crushed aggregates.

Table 4: End-of-life scenario parameters

Processes	Quantity per m ³ of concrete	Unit
Collection process specified by type	2,350	kg collected separately
	0	kg collected with mixed construction waste
Transport from demolition site to recovery / disposal sites	50	km transport
Recovery system specified by type	0	kg for re-use
	1,871	kg for recycling
	0	kg for energy recovery
Disposal to landfill	479	kg product or material for final deposition
Assumptions for scenario development	145	MJ of diesel for the demolition process (C1)

Life Cycle Assessment (LCA) Methodology

Background Data

Gunlake Concrete has collected and supplied the primary data for the ready-mixed concrete LCA based on the FY21 reporting period (1 July 2020 – 30 June 2021). Gunlake Quarries provided data for the coarse aggregates and manufactured sand that they supply to Gunlake Concrete. Background data is predominantly sourced from AusLCI and the AusLCI shadow database v1.42 (AusLCI 2023). Data for admixtures has been sourced from EPDs published by EFCA (EFCA 2021a, 2021b, 2023). As a result, the vast majority of the environmental profile of our products is based on life cycle data less than three years old.

Background data used is less than 10 years old. Methodological choices have been applied in line with EN 15804:2012+A2:2019; deviations have been recorded.

Key assumptions

- The concrete composition of each product is provided by Gunlake and has been accepted as is.
- Our supplier has provided information on their cement (including cement clinker) production process. We have adjusted the generic AusLCI data for cement and clinker production accordingly.
- Additional environmental impact indicators are not declared in the admixture EPDs, which results in underreporting of these indicators.
- Allocation approaches may have a material effect on concrete products containing fly ash and/or ground granulated blast furnace slag.
- Electricity has been modelled for core processes using the AusLCI data for the electricity mix used in New South Wales. The GWP-GHG of the electricity is 0.77 kg CO_{2e} / kWh. The grid mix is made up of black coal (76.5%), natural gas (4.1%), oil products (0.5%), wood (1.0%), biogas (0.6%), wind (6.5%), hydro (3.0%), and solar (7.9%).
- The end-of-life scenario is based on landfill and recycling rates for masonry products in New South Wales, as per the National Waste Report 2022 (NWR 2022).

Allocation

The key processes that require allocation are:

- Production of concrete mixes: All shared processes are attributed to concrete products based on their volume.
- Fly ash: all environmental impacts of the power plant have been allocated to the main product: electricity, fly ash has only received the burdens of the transport to our site.
- Blast Furnace Slag (BFS): BFS is a by-product from steel-making. We have used the AusLCI data for BFS ('Blast Furnace Slag allocation, at steel plant / AU U'), which contain impacts from pig iron production allocated to blast furnace slag using economic allocation.
- Aggregates: Coarse aggregates and manufactured sand are produced through crushing of rock, which is graded in different sizes. The energy required for the crushing and screening does not differentiate from products. Therefore, impacts are allocated to products, based on the mass. In effect, all aggregates have the same environmental profile.

Cut-off criteria

- The cut-off criteria applied are 1% of renewable and non-renewable primary energy usage, 1% of the total mass input of a process and 1% of environmental impacts.
- The contribution of capital goods (production equipment and infrastructure) and personnel is excluded, as these processes are non-attributable and they contribute less than 10% to GWP-GHG.

Life Cycle Assessment (LCA) indicators

An LCA serves as the foundation for this EPD. An LCA analyses the production systems of a product. It provides comprehensive evaluations of all upstream and downstream energy inputs and outputs. The results are provided in a form which covers a range of environmental impact categories.

Table 5: Environmental indicators legend (EN 15804+A2)

Core indicators	Acronym	Unit
Climate change – total	GWP-total	kg CO ₂ equivalent
Climate change – fossil	GWP-fossil	kg CO ₂ equivalent
Climate change – biogenic	GWP-biogenic	kg CO ₂ equivalent
Climate change – land use and land use change	GWP-luluc	kg CO ₂ equivalent
Ozone layer depletion	ODP	kg CFC-11 equivalent
Acidification	AP	mol H ⁺ equivalent
Eutrophication aquatic freshwater	EP-freshwater	kg P equivalent
Eutrophication aquatic marine	EP-marine	kg N equivalent
Eutrophication terrestrial	EP-terrestrial	mol N equivalent
Photochemical ozone formation	POCP	kg NMVOC equivalent
Abiotic depletion potential – elements ²	ADP minerals & metals	kg Sb equivalent
Abiotic depletion potential – fossil fuels ²	ADP fossil	MJ, net calorific value
Water use ²	WDP	m ³ world equivalent deprived
Additional indicators	Acronym	Unit
Global Warming Potential – Greenhouse gases	GWP-GHG	kg CO ₂ equivalent
Particulate matter emissions	PM	disease incidence
Ionising radiation, human health ¹	IRP	kBq U235 equivalent
Ecotoxicity (freshwater) ²	ETP-fw	CTUe
Human toxicity, cancer effects ²	HTP-c	CTUh
Human toxicity, non-cancer effects ²	HTP-nc	CTUh
Land use related impacts / soil quality ²	SQP	- (dimensionless)
Additional GHG indicator	Acronym	Unit
Carbon footprint in line with IPCC AR5³	GWP-GHG (IPCC AR5)	kg CO₂ eq

¹ This impact category deals mainly with the eventual impact of low dose ionizing radiation on human health of the nuclear fuel cycle. It does not consider effects due to possible nuclear accidents, occupational exposure nor due to radioactive waste disposal in underground facilities. Potential ionizing radiation from the soil, from radon and some construction materials, is also not measured by this indicator.

² The results of this environmental impact indicator shall be used with care as the uncertainties on these results are high or as there is limited experience with the indicator.

³ **Note regarding various GWP indicators:** GWP-total is calculated using the European Union’s Joint Research Centre’s characterisation factors (CFs) based on the “EF 3.0 package” for CFs to be used in the EU’s Product Environmental Footprint (PEF) framework. CFs listed by JRC include indirect radiative forcing, which results in higher numerical Global Warming Potential (GWP) values than the CFs in the internationally accepted (IPCC 2013). The GWP-GHG indicator is identical to GWP-total except that the CFs for biogenic CO₂ are set to zero. The GWP-GHG indicator in PCR 2019:14 v1.3.1 differs from the GWP-GHG in earlier PCR 2019:14 versions. The **GWP-GHG (IPCC AR5)** indicator is determined using the IPCC AR5 Global Warming Potentials (GWP) with a 100-year time horizon. This indicator is aligned with Australia’s greenhouse gas reporting frameworks.

Table 6: Legend for parameters describing resource use, waste and output flows

Parameter	Acronym	Unit
Parameters describing resource use		
Use of renewable primary energy excluding renewable primary energy resources used as raw materials	PERE	MJ _{NCV}
Use of renewable primary energy resources used as raw materials	PERM	MJ _{NCV}
Total use of renewable primary energy resources	PERT	MJ _{NCV}
Use of non-renewable primary energy excluding non-renewable primary energy resources used as raw materials	PENRE	MJ _{NCV}
Use of non-renewable primary energy resources used as raw materials	PENRM	MJ _{NCV}
Total use of non-renewable primary energy resources	PENRT	MJ _{NCV}
Use of secondary material	SM	kg
Use of renewable secondary fuels	RSF	MJ _{NCV}
Use of non-renewable secondary fuels	NRSF	MJ _{NCV}
Use of net fresh water	FW	m ³
Waste categories		
Hazardous waste disposed	HWD	kg
Non-Hazardous waste disposed	NHWD	kg
Radioactive waste disposed	RWD	kg
Output flows		
Components for re-use	CRU	kg
Materials for recycling	MFR	kg
Materials for energy recovery	MER	kg
Exported energy	EE	MJ

Table 7: Legend for EN 15804+A1 indicators

Indicator	Acronym	Unit
Global warming potential	GWP	kg CO ₂ equivalent
Ozone layer depletion potential	ODP	kg CFC-11 equivalent
Acidification potential	AP	kg SO ₂ equivalent
Eutrophication potential	EP	kg PO ₄ ³⁻ equivalent
Photochemical oxidation (Photochemical ozone creation) potential	POCP	kg ethylene equivalent
Abiotic depletion potential - elements	ADPE	kg Sb equivalent
Abiotic depletion potential – fossil fuels	ADPF	MJ _{NCV}



Results: Environmental profiles

The following section presents the results for each Life Cycle Assessment module, with details regarding sites, scenarios and products.

“The estimated impact results are only relative statements, which do not indicate the endpoints of the impact categories, exceeding threshold values, safety margins and/or risks”.

Table 8 below shows where to find the results tables.

Table 8: Legend for results tables

Modules	Mix	Tables	Page
A1-A3 (Product stage)¹	N25/20/100 GS3		
	N32/20/100 GS3		
	N40/20/100 GS3	9	13
	N50/20/100 GS3	10	14
	N40/20/120 GS3	11	15
	S40/10/220 TAY/GS3 NSG 8:1 No Fines		
C1-C4, D (End of life stage, Benefits beyond system boundary)	All mixes	12	16
		13, 14	17

¹ It is recommended to consider the results of module C in light of the results for modules A1-A3.



Cradle-to-gate (A1-A3)

The cradle-to-gate environmental indicators of each product group are expressed per m³.

Table 9: Environmental indicators EN 15804+A2 (A1-A3), ready-mixed concrete, per m³

EPD product identification number		S-P-10952-1	S-P-10952-2	S-P-10952-3	S-P-10952-4	S-P-10952-5	S-P-10952-6	S-P-10952-7
Environmental Indicator	Unit	N25/20/100 GS3	N32/20/100 GS3	N40/20/100 GS3	N50/20/120 GS3	N40/20/120 GS3	S40/10/220 TAY/GS3	NSG 8:1 No Fines
Core Indicators								
GWP-total	kg CO ₂ -eq.	2.04E+02	2.31E+02	2.51E+02	2.90E+02	2.53E+02	2.48E+02	1.76E+02
GWP-fossil	kg CO ₂ -eq.	2.04E+02	2.31E+02	2.50E+02	2.90E+02	2.53E+02	2.48E+02	1.76E+02
GWP-biogenic	kg CO ₂ -eq.	1.03E-01	1.13E-01	1.22E-01	1.45E-01	1.33E-01	1.22E-01	5.92E-02
GWP-luluc	kg CO ₂ -eq.	1.51E-03	1.78E-03	2.00E-03	2.52E-03	2.28E-03	2.29E-03	8.74E-04
ODP	kg CFC11-eq.	9.42E-06	9.67E-06	9.82E-06	1.00E-05	9.82E-06	9.78E-06	8.81E-06
AP	mol H+ eq.	1.18E+00	1.31E+00	1.40E+00	1.58E+00	1.41E+00	1.40E+00	1.08E+00
EP-freshwater	kg P eq.	4.06E-04	4.78E-04	5.32E-04	6.42E-04	5.39E-04	5.32E-04	3.69E-04
EP-marine	kg N eq.	3.54E-01	3.91E-01	4.18E-01	4.72E-01	4.21E-01	4.16E-01	3.27E-01
EP-terrestrial	mol N eq.	3.93E+00	4.35E+00	4.66E+00	5.26E+00	4.69E+00	4.63E+00	3.65E+00
POCP	kg NMVOC eq.	9.62E-01	1.06E+00	1.14E+00	1.29E+00	1.15E+00	1.13E+00	8.91E-01
ADP minerals & metals²	kg Sb eq.	1.82E-06	1.97E-06	2.08E-06	2.32E-06	2.31E-06	2.42E-06	1.26E-06
ADP fossil²	MJ (NCV)	1.68E+03	1.85E+03	1.97E+03	2.20E+03	1.99E+03	1.94E+03	1.36E+03
WDP	m ³ world eq. deprived	1.67E+03	1.97E+03	2.19E+03	2.65E+03	2.22E+03	2.20E+03	1.49E+03
Additional indicators								
GWP-GHG	kg CO ₂ -eq.	2.04E+02	2.31E+02	2.51E+02	2.90E+02	2.53E+02	2.48E+02	1.76E+02
PM	Disease incidence	5.74E-06	6.08E-06	6.33E-06	6.76E-06	6.35E-06	6.19E-06	5.43E-06
IRP¹	kBq U235 eq.	1.63E+00	1.93E+00	2.16E+00	2.63E+00	2.18E+00	2.16E+00	1.49E+00
ETP-fw²	CTUe	8.57E+02	9.82E+02	1.07E+03	1.26E+03	1.08E+03	1.06E+03	7.47E+02
HTP-c²	CTUh	1.18E-08	1.38E-08	1.53E-08	1.83E-08	1.54E-08	1.52E-08	1.02E-08
HTP-nc²	CTUh	7.20E-07	8.46E-07	9.39E-07	1.13E-06	9.48E-07	9.29E-07	6.18E-07
SQP²	-	3.76E+02	3.77E+02	3.76E+02	3.71E+02	3.76E+02	3.69E+02	3.48E+02
Carbon footprint								
GWP-GHG (IPCC AR5)	kg CO₂ eq	200	227	246	285	248	243	174



Table 10: EN 15804+A2 parameters (A1-A3), ready-mixed concrete, per m³

EPD product identification number		S-P-10952-1	S-P-10952-2	S-P-10952-3	S-P-10952-4	S-P-10952-5	S-P-10952-6	S-P-10952-7
Parameter	Unit	N25/20/100 GS3	N32/20/100 GS3	N40/20/100 GS3	N50/20/100 GS3	N40/20/120 GS3	S40/10/220 TAY/GS3	NSG 8:1 No Fines
PERE	MJ _{NCV}	3.08E+01	3.43E+01	3.69E+01	4.25E+01	3.82E+01	3.70E+01	2.23E+01
PERM	MJ _{NCV}	1.51E-01	1.77E-01	2.00E-01	2.68E-01	2.47E-01	2.32E-01	3.95E-02
PERT	MJ _{NCV}	3.10E+01	3.45E+01	3.71E+01	4.28E+01	3.85E+01	3.72E+01	2.23E+01
PENRE	MJ _{NCV}	1.68E+03	1.84E+03	1.96E+03	2.19E+03	1.98E+03	1.93E+03	1.36E+03
PENRM	MJ _{NCV}	6.13E+00	7.20E+00	8.14E+00	1.11E+01	9.53E+00	7.93E+00	1.95E+00
PENRT	MJ _{NCV}	1.68E+03	1.85E+03	1.97E+03	2.20E+03	1.99E+03	1.94E+03	1.36E+03
SM	kg	1.45E+02	1.72E+02	1.93E+02	2.34E+02	1.95E+02	1.93E+02	9.22E+01
RSF	MJ _{NCV}	0.00E+00	0.00E+00	0.00E+00	0.00E+00	0.00E+00	0.00E+00	0.00E+00
NRSF	MJ _{NCV}	0.00E+00	0.00E+00	0.00E+00	0.00E+00	0.00E+00	0.00E+00	0.00E+00
FW	m ³	2.44E+00	2.51E+00	2.55E+00	2.66E+00	2.55E+00	2.59E+00	1.37E+00
HWD	kg	2.16E-08	2.54E-08	2.88E-08	3.77E-08	3.70E-08	3.80E-08	4.56E-09
NHWD	kg	6.07E-01	6.99E-01	7.79E-01	9.26E-01	1.11E+00	1.41E+00	9.70E-02
RWD	kg	1.02E-03	1.19E-03	1.35E-03	1.79E-03	1.71E-03	1.70E-03	2.35E-04
CRU	kg	0.00E+00	0.00E+00	0.00E+00	0.00E+00	0.00E+00	0.00E+00	0.00E+00
MFR	kg	3.26E+01	3.26E+01	3.26E+01	3.26E+01	3.26E+01	3.26E+01	3.26E+01
MER	kg	0.00E+00	0.00E+00	0.00E+00	0.00E+00	0.00E+00	0.00E+00	0.00E+00
EE	MJ	0.00E+00	0.00E+00	0.00E+00	0.00E+00	0.00E+00	0.00E+00	0.00E+00



Table 11: EN 15804+A1 indicators (A1-A3), ready-mixed concrete, per m³

EPD product identification number		S-P-10952-1	S-P-10952-2	S-P-10952-3	S-P-10952-4	S-P-10952-5	S-P-10952-6	S-P-10952-7
Environmental Indicator	Unit	N25/20/100 GS3	N32/20/100 GS3	N40/20/100 GS3	N50/20/100 GS3	N40/20/120 GS3	S40/10/220 TAY/GS3	NSG 8:1 No Fines
GWP	kg CO ₂ eq	2.02E+02	2.29E+02	2.48E+02	2.88E+02	2.51E+02	2.46E+02	1.75E+02
ODP	kg CFC11 eq	7.49E-06	7.70E-06	7.83E-06	8.02E-06	7.83E-06	7.80E-06	7.01E-06
AP	kg SO ₂ eq	7.87E-01	8.84E-01	9.56E-01	1.10E+00	9.65E-01	9.55E-01	7.20E-01
EP	kg PO ₄ ³⁻ eq	1.24E-01	1.37E-01	1.47E-01	1.66E-01	1.48E-01	1.46E-01	1.14E-01
POCP	kg C ₂ H ₄ eq	3.92E-02	4.32E-02	4.61E-02	5.18E-02	4.65E-02	4.59E-02	3.53E-02
ADPE	kg Sb eq	4.51E-06	5.13E-06	5.66E-06	6.86E-06	7.14E-06	7.89E-06	1.73E-06
ADPF	MJ _{NCV}	1.64E+03	1.80E+03	1.91E+03	2.14E+03	1.93E+03	1.88E+03	1.32E+03

End of life stage (C1-C4 plus D)

The results for the end-of-life stage (C1-C4) and benefits beyond the system boundary (D) are expressed per m³ of concrete (based on a single scenario for concrete with a density of 2,300 kg/m³).

Table 12: EN 15804+A2 Core indicators (C1-C4; D), ready-mixed concrete, per m³

Environmental Indicator	Unit	Module C1	Module C2	Module C3	Module C4	Module D
Core Indicators						
GWP-total	kg CO ₂ -eq.	1.21E+01	1.53E+01	7.73E+00	1.14E+00	-1.39E+01
GWP-fossil	kg CO ₂ -eq.	1.21E+01	1.53E+01	7.72E+00	1.14E+00	-1.39E+01
GWP-biogenic	kg CO ₂ -eq.	9.32E-04	1.05E-03	8.05E-03	1.04E-04	-2.43E-02
GWP-luluc	kg CO ₂ -eq.	5.96E-06	7.10E-06	3.56E-06	5.51E-07	-4.28E-06
ODP	kg CFC11-eq.	1.99E-06	2.37E-06	9.70E-07	1.86E-07	-1.14E-06
AP	mol H+ eq.	1.37E-01	1.32E-01	2.11E-02	2.71E-03	-1.15E-01
EP-freshwater	kg P eq.	1.66E-06	9.04E-07	5.69E-06	1.55E-07	-1.53E-05
EP-marine	kg N eq.	5.96E-02	4.16E-02	3.76E-03	4.89E-04	-3.75E-02
EP-terrestrial	mol N eq.	6.53E-01	4.56E-01	4.10E-02	5.35E-03	-4.29E-01
POCP	kg NMVOC eq.	1.74E-01	1.11E-01	1.10E-02	1.44E-03	-1.08E-01
ADP minerals & metals²	kg Sb eq.	1.47E-08	1.75E-08	1.91E-06	1.34E-09	-9.92E-07
ADP fossil²	MJ (NCV)	1.74E+02	2.07E+02	1.10E+02	1.62E+01	-1.64E+02
WDP²	m ³ world eq. deprived	1.12E+00	1.32E+00	2.37E+00	1.04E-01	-1.99E+00
Additional indicators						
GWP-GHG	kg CO ₂ -eq.	1.21E+01	1.53E+01	7.73E+00	1.14E+00	-1.39E+01
PM	Disease incidence	3.62E-06	7.44E-07	1.41E-07	1.44E-08	-2.19E-06
IRP¹	kBq U235 eq.	2.54E-04	3.02E-04	1.55E-03	2.35E-05	-2.24E-04
ETP-fw²	CTUe	4.50E+01	5.31E+01	2.49E+01	4.10E+00	-3.63E+01
HTP-c²	CTUh	4.82E-10	6.45E-11	1.61E-10	8.98E-12	-5.56E-10
HTP-nc²	CTUh	4.89E-08	7.15E-09	7.41E-09	7.86E-10	-3.41E-08
SQP²	-	8.34E-01	9.27E-01	2.08E+04	2.67E+01	-3.42E+02
Carbon footprint						
GWP-GHG (IPCC AR5)	kg CO₂ eq	12.0	15.0	7.68	1.14	-13.6

Table 13: EN 15804+A2 parameters (C1-C4; D), ready-mixed concrete, per m³

Parameter	Unit	Module C1	Module C2	Module C3	Module C4	Module D
PERE	MJ _{NCV}	2.69E-01	2.96E-01	1.89E+00	3.16E-02	-6.17E+00
PERM	MJ _{NCV}	0.00E+00	0.00E+00	0.00E+00	0.00E+00	0.00E+00
PERT	MJ _{NCV}	2.69E-01	2.96E-01	1.89E+00	3.16E-02	-6.17E+00
PENRE	MJ _{NCV}	1.84E+02	2.19E+02	1.15E+02	1.71E+01	-1.70E+02
PENRM	MJ _{NCV}	0.00E+00	0.00E+00	0.00E+00	0.00E+00	0.00E+00
PENRT	MJ _{NCV}	1.84E+02	2.19E+02	1.15E+02	1.71E+01	-1.70E+02
SM	kg	0.00E+00	0.00E+00	0.00E+00	0.00E+00	0.00E+00
RSF	MJ _{NCV}	0.00E+00	0.00E+00	0.00E+00	0.00E+00	0.00E+00
NRSF	MJ _{NCV}	0.00E+00	0.00E+00	0.00E+00	0.00E+00	0.00E+00
FW	m ³	2.52E-02	2.99E-02	3.90E-02	2.34E-03	-2.14E-01
HWD	kg	0.00E+00	0.00E+00	0.00E+00	0.00E+00	0.00E+00
NHWD	kg	7.96E-04	8.77E-04	5.35E-03	4.79E+02	-4.59E-02
RWD	kg	0.00E+00	0.00E+00	0.00E+00	0.00E+00	0.00E+00
CRU	kg	0.00E+00	0.00E+00	0.00E+00	0.00E+00	0.00E+00
MFR	kg	0.00E+00	0.00E+00	1.87E+03	0.00E+00	0.00E+00
MER	kg	0.00E+00	0.00E+00	0.00E+00	0.00E+00	0.00E+00
EE	MJ	0.00E+00	0.00E+00	0.00E+00	0.00E+00	0.00E+00

Table 14: EN 15804+A1 indicators (C1-C4; D), ready-mixed concrete, per m³

Environmental Indicator	Unit	Module C1	Module C2	Module C3	Module C4	Module D
GWP	kg CO ₂ eq	1.19E+01	1.50E+01	7.66E+00	1.13E+00	-1.37E+01
ODP	kg CFC11 eq	1.57E-06	1.87E-06	7.66E-07	1.47E-07	-9.01E-07
AP	kg SO ₂ eq	9.73E-02	7.32E-02	1.33E-02	2.18E-03	-6.46E-02
EP	kg PO ₄ ³⁻ eq	2.00E-02	1.40E-02	1.31E-03	1.68E-04	-1.46E-02
POCP	kg C ₂ H ₄ eq	9.53E-03	4.73E-03	7.45E-04	1.09E-04	-5.31E-03
ADPE	kg Sb eq	1.49E-08	1.77E-08	1.91E-06	1.36E-09	-1.00E-06
ADPF	MJ _{NCV}	1.74E+02	2.07E+02	1.10E+02	1.62E+01	-1.64E+02



Additional information

Waste and Recycling

Throughout Gunlake's operations some materials are re-used into our production processes, including concrete washout, which beneficially reuses materials that would otherwise require disposal.

Biodiversity Management

Gunlake has established biodiversity offset land at its Marulan Quarry. These areas are managed in accordance with both NSW and Commonwealth requirements and have been established to provide long term protection and enhancement of habitat and ecological communities.

Community Investment

Gunlake participates in numerous local community programs and events, including ongoing annual funding/grant commitments, community initiatives and memberships. Gunlake will continue to provide such community support and investment within the local and regional areas in which it operates.

References

- AusLCI 2023 Australian Life Cycle Inventory database v1.40 published by the Australian Life Cycle Assessment Society, 2023
- ECHA 2023 European Chemicals Association, Candidate List of substances of very high concern for Authorisation, published in accordance with Article 59(10) of the REACH Regulation, Helsinki
Accessed on 1 February 2024 from: <https://echa.europa.eu/candidate-list-table>
- EFCA 2021a EPD of Retarders, IBU EPD Declaration number EPD-EFC-20210195-IBG1-EN, issued 2021-12-16, based on EN 15804 and PCR for concrete admixtures; EPD owner: EFCA - European Federation of Concrete Admixtures Associations
- EFCA 2021b EPD of Air Entrainers, IBU EPD Declaration number EPD-EFC-20210193-IBG1-EN, issued 2021-12-16, based on EN 15804 and PCR for concrete admixtures; EPD owner: EFCA - European Federation of Concrete Admixtures Associations
- EFCA 2023 EPD of Plasticizer and superplasticizer, IBU EPD Declaration number EPD-EFC-20210198-IBG2-EN, issued 2023-08-14, based on EN 15804 and PCR for concrete admixtures; EPD owner: EFCA - European Federation of Concrete Admixtures Associations
- Environdec 2021 International EPD System, General Programme Instructions for the International EPD System, Version 4.0, 29 March 2021
- Environdec 2023 c-PCR-003 Concrete and concrete elements (EN 16757:2022), Product category rules for concrete and concrete elements, version 2 January 2023
- EN 15804+A2 EN 15804:2012+A2:2019/AC:2021, Sustainability of construction works – Environmental product declarations – Core rules for the product category of construction products, European Committee for Standardization (CEN), Brussels, August 2021
- EN 15804+A1 Sustainability of construction works – Environmental product declarations – Core rules for the product category of construction products, European Committee for Standardization (CEN), Brussels, November 2013
- ISO 14025 Environmental labels and declarations - Type III environmental declarations - Principles and procedures. International Organization for Standardization, Geneva, Switzerland, 2006
- ISO 14040 Environmental management - Life cycle assessment - Principles and framework. International Organization for Standardization, Geneva, Switzerland, 2006
- ISO 14044 Environmental management - Life cycle assessment - Requirements and guidelines. International Organization for Standardization, Geneva, Switzerland, 2006
- NWR 2022 Blue Environment, National Waste Report 2022, prepared for The Department of Climate Change, Energy, the Environment and Water, Final version 1.2, 16 December 2022 (updated 10 February 2023)
- PCR 2019:14 Product category rules for Construction products (EN 15804:2012+A2:2019), registration number 2019:14, version 1.3.1, published on 8 July 2023.
- AS 1379 Specification and supply of concrete, prepared by Committee BD-049 Manufacture of Concrete, published on 20 September 2007 by Standards Australia, Sydney



Contact information

1300 857 091

www.gunlake.com.au

info@gunlake.com.au

Prestons Plant: 14 Yarrunga St, Prestons 2170
NSW, Australia



This publication provides general information only and is no substitute for professional engineering advice. No representations or warranties are made regarding the accuracy, completeness or relevance of the information provided. Users must make their own determination as to the suitability of this information or any Gunlake product for their specific circumstances. Gunlake accepts no liability for any loss or damage resulting from any reliance on the information provided in this publication.

© February 2024 Gunlake Concrete NSW Pty. Ltd. ABN 36 162 907 575. All rights reserved.